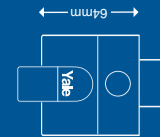


**BUY THE RIGHT SIZE FOR YOUR DOOR**

This lock is designed to fit all solid and glass-panelled wooden doors where there is restricted width to mount a lock. The centre of the keyhole must be 40mm (1 5/8") from the edge of the door. The overall width of the lock body to be fitted to the inside of the door is 64mm (2 1/2").

For doors where there is no restriction on width, choose a standard lock which places the centre of the keyhole 60mm (2 3/8") from the edge of the door. For this style of Yale lock in a standard width design, ask your stockist for Yale model P88.



- Other Yale products:
- Door handles & knobs
- Alarm Kits
- Stand alone alarms
- Safes
- CCTV

**Recommended security**

**Front door security**

- 01 Yale PM562 British Standard 5 Lever Deadlock
- 02 Yale PBS1/PBS2 British Standard Night Latch
- 03 Yale P9401 Door Viewer
- 04 Yale P1037 Door Chain
- 05 Yale PM444 Door Bolts
- 06 Yale P125 Hinge bolts (for outward opening doors)

**Back door security**

- 01 Yale PM560 British Standard 5 Lever Lock
- 02 Yale PM444 Door Bolts
- 03 Yale P125 Hinge bolts (for outward opening doors)

**Window security**

- Wooden casement windows**
  - 01 Yale P113 Window Toggle Lock
  - 02 Yale P118 Automatic Window Lock
- Wooden sash windows**
  - 03 Yale P119 Window Bolt
  - 04 Yale P123 Pressbolt
- Metal windows**
  - 05 Yale P113M Toggle Window Lock
  - 06 Yale P121 Stay Clamp

With a wide range of quality products to protect every part of your home it is little wonder that Yale has been the first choice in home security for more than a century.

Send for this free home security guide. This booklet outlines the steps involved in making your home more secure.



For further advice on how to secure your home, visit our website

[www.yale.co.uk](http://www.yale.co.uk)

Consumer Helpline:

Tel: +44 (0)1902 364606

Trade Helpline:

Tel: 0845 223 2126



**Yale® Lock**  
With Manual Deadlocking

For use on external timber doors

- Latch can be deadlocked or held back by the snib button

**STANDARD SECURITY**

**10 YEAR GUARANTEE**

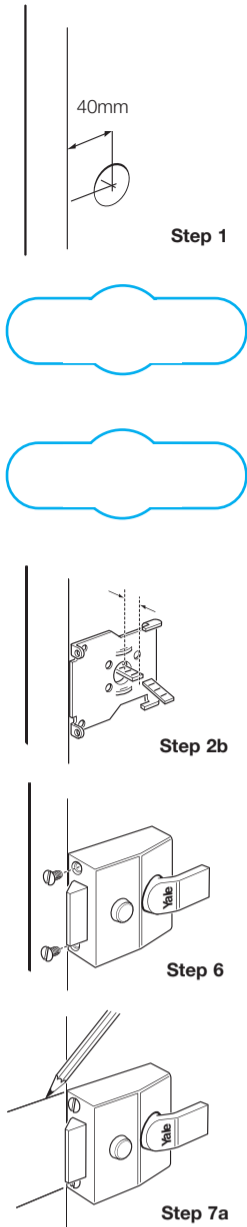


**40MM BACKSET**

**DARK GREY FINISH**

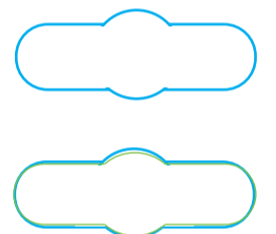
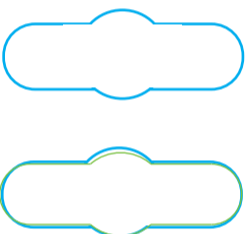
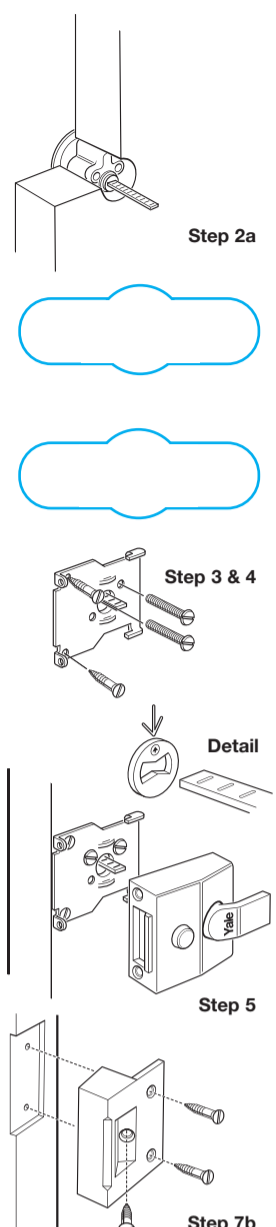
FOR MORE INFORMATION SEE BACK OF PACK

**FITTING INSTRUCTIONS P-84-DMG-PB-40**



- At the height you want your lock, use a pencil to mark a spot exactly 40mm (1 5/8") from the edge of the door. At that spot, drill a 32mm (1 1/4") diameter hole through the door.
- With the key removed, insert the cylinder through the brass ring and place it in the hole. Hold the mounting plate against the inside of the door. If necessary, use a fine-toothed hacksaw to shorten the flat connecting bar so that it projects 12mm (15/32") beyond the surface of the mounting plate.
- Secure the cylinder to the mounting plate using the flat-ended connecting screws provided, inserted through the top pair of holes in the centre of the mounting plate. For doors less than 45mm (1 3/4") thick, you will need to shorten the connecting screws to make sure that they fit tight onto the mounting plate.
- Secure the mounting plate to the door with two woodscrews supplied. Make sure that the projection on the front of the mounting plate is 1.5mm (1/16") from the edge of the door.
- Use the button on the front of the lock case to latch back the lock in the open position. Align the arrow on the back of the case with the arrow on the rotatable slot. Place the lock case over the mounting plate, making sure that the flat connecting bar is inside the slot on the lock case.
- Push the lock case down firmly onto the mounting plate. Then slide the lock case sideward to its final position, flush with the edge of the door. Secure the lock case to the mounting plate with the two small screws supplied.
- Close the door and, using the lock case as a guide, mark the position of the remaining component – the 'staple' – on the door frame. Chisel out a recess in the door frame to hold the staple flush with the frame and fix it with the screws provided.

The fitting of your new Yale lock is now complete and guaranteed for 10 years.



**CAUTION:**

This lock is not designed for use with outward opening doors. Do not attempt to modify it.

**DOOR THICKNESS:** This lock is suitable for doors up to 57mm (2 1/4") thick or 54mm (2 1/8") where a doorpull is fitted.

**CARE OF YOUR CYLINDER RIM LOCK:** Never take your cylinder apart. Never oil or paint the cylinder. To lubricate, use WD40 or similar.

**LOCK:** Moving parts may be greased.

**FOR MAXIMUM SECURITY:**

The gap between the lock body and the 'staple' should be kept to a minimum and must never exceed 5mm (3/16").

**Recommended Front Door Security**

- Mortice Lock**  
PM562 British Standard
- Night Latch**  
Maximum Security  
PBS1 or PBS2 British Standard  
High Security  
P1 or P2
- Door Viewer**  
P9401
- Door Chain**  
P1037
- Door Bolts**  
PM444
- Hinge Bolts**  
P125 (for outward opening doors only)

**THIS PRODUCT**

**Tools required if fitting on a new door:**

- Drill
- Required Drill Bits:
  - ø3mm (1/8") Drill Bit
  - ø32mm (1 1/4") Drill Bit
- Cross head screwdriver
- Fine-toothed hack saw
- Pencil
- Hammer
- Chisel
- Flat ended screwdriver

- Suitable for both left and right handed, inward opening doors
- Snib function enables the latch to be held back
- Latch can be deadlocked by the snib button internally, making the lock inoperable by key or handle
- For full fitting instructions see inside pack



SNIB BUTTON OPERATES THE DEADLOCK AND HOLD BACK FUNCTIONS INTERNALLY



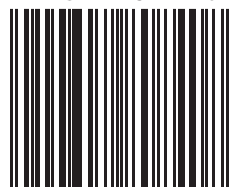
MANUFACTURERS WARRANTY GUARANTEED AGAINST FAULTY MATERIALS AND WORKMANSHIP

**Yale** The world's favorite lock

Yale  
School Street, Willenhall,  
West Midlands WV13 3PW.  
England  
Tel: +44 (0)1902 364606  
Fax: +44 (0)1902 364692  
[www.yale.co.uk](http://www.yale.co.uk)



**P-84-DMG-PB-40**



5 010608 808408 >